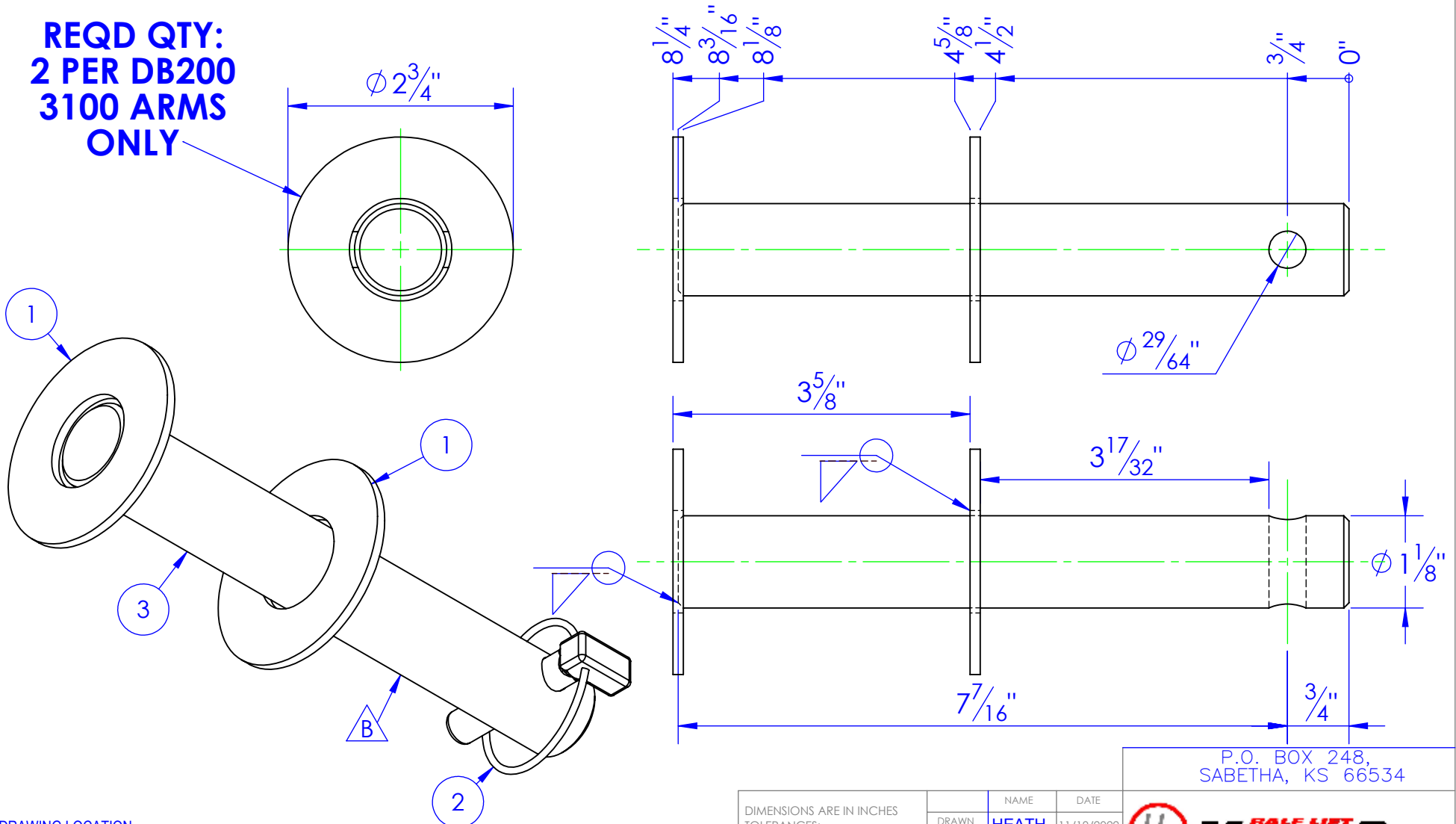


ITEM NO.	PART NUMBER	DESCRIPTION	DRAWING #	QTY.
1	BO-1.125 FW	FLAT WASHER 1-1/8"	STOCK	2
2	HD-PL .4375 HD	7/16 Lynch Pin.	STOCK	1
3	STC-CR 1.125x4142 L 8.1875 with hole	LENGTH: 8-3/16"	90-1503	1

REV.	DESCRIPTION	DATE	APPROVED
A	UPDATED TO NEW DWG FROM 10-1710	12/4/2012	
B	REVISED PIN LENGTH FROM 7-11/16" TO 8-3/16" BECAUSE OF 3-1/2" ARMS	8/22/2013	
C	UPDATED ASM. DESCRIPTION TO SAY 3-1/2" ARM	11/19/2022	HP

**REQD QTY:
2 PER DB200
3100 ARMS
ONLY**



DRAWING LOCATION:

M:\Drawings\Heath Information\Triple CIST TC SW\90 OPTIONS\0500 DB200\1500 DB 200

ASM LOCATION:

M:\Drawings\Heath Information\Triple CIST TC SW\SW MODELS\IRE\RE-PN

PROPRIETARY AND CONFIDENTIAL
THE INFORMATION CONTAINED IN THIS
DRAWING IS THE SOLE PROPERTY OF TRIPLE
C INC. ANY REPRODUCTION IN PART OR
AS A WHOLE WITHOUT THE WRITTEN
PERMISSION OF TRIPLE C INC. IS PROHIBITED.

DIMENSIONS ARE IN INCHES
TOLERANCES:
FRACTIONAL $\pm 1/16$
ANGULAR: MACH ± 1 BEND \pm
TWO PLACE DECIMAL ± 0.10
THREE PLACE DECIMAL ± 0.005

MATERIAL ---
DO NOT SCALE DRAWING

NAME	DATE
DRAWN HEATH	11/19/2022
PART # RE-PN-L081875	
ASM #	
COMMENTS: PIN, LIFT DB200, 3-1/2" ARMS	

P.O. BOX 248,
SABETHA, KS 66534



SIZE A	DWG. NO. 90-1503 C	REV. C
SCALE: 1:1.75	WEIGHT: 2.74	SHEET 1 OF 1